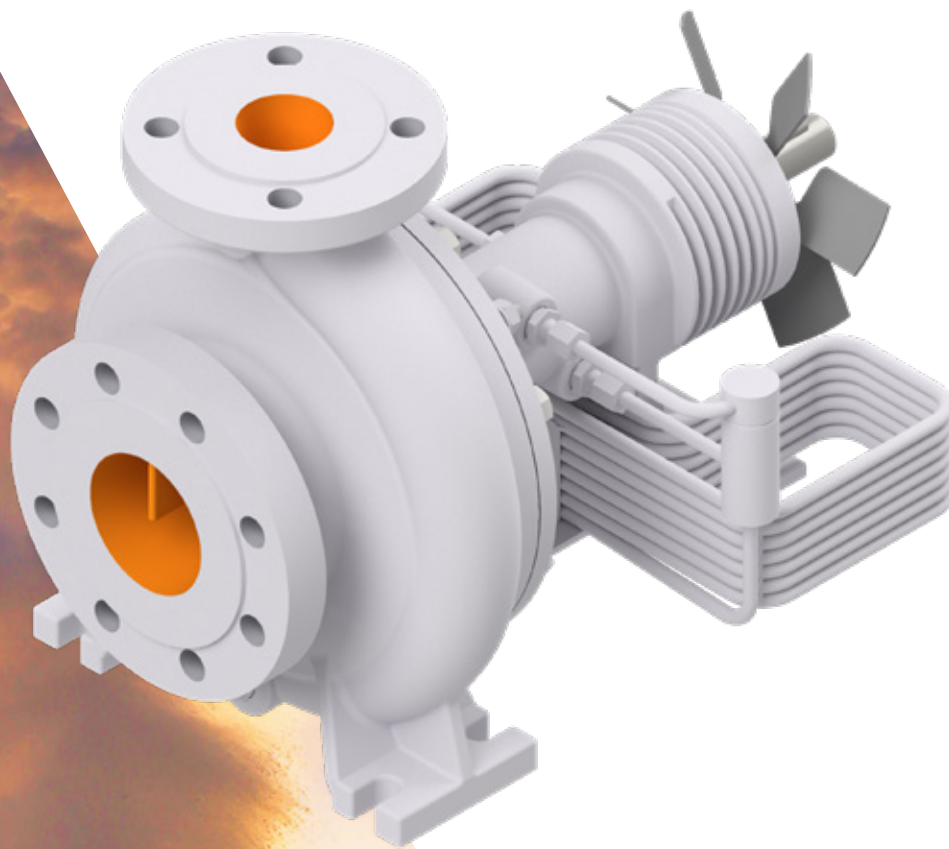


Hot Water Pump

Type NHX

- Reliable operation up to 428 °F / 220 °C
- Requires no external or water cooling
- Patented cooling & degassing system ensures minimal life cycle costs



Applications

- Oil & Gas
- Chemistry & Petrochemistry
- Offshore
- Ship technology & Marine
- Refueling equipment & Aviation
- Industrial heating systems & Heat carriers
- Tank storages & Tank farms
- Renewable energy & Environmental Technology

Hot Water Pump

Type NHX

Type NHX is designed for use in medium and large hot water systems. It is a single-stage volute casing pump, with an axial suction port and axial center discharge port pointing vertically upwards. The design of the DICKOW hot water circulation pump takes into account many years of experience in the hot water sector and allows for high operational reliability. The patented cooling and degassing system ensures moderate temperatures in the plain bearing area and guarantees a stable liquid film in the mechanical seal gap. The pump is self-venting and does not require any external or water cooling. External intervention is not required. High rolling bearing temperatures are prevented even under extreme load conditions. The efficient hydraulics and low maintenance requirements enable the lowest life cycle costs.

Design

Pumptype	Volute casing pump
Stages	Single-staged
Sealing	Mechanical Seal
Set-up	Horizontal
Self-priming	No
Bearings	Rolling bearings, plain bearings
Lubrication	Grease

Werkstoffe

Ductile cast iron (EN-GJS) / Cast steel (GP 240 GH)
1.7706

Technische Daten

Q max	6164 gpm / 1400 m ³ /h**
H max	722 feet / 220 m**
Operating pressure	518 psi / 40 bar*
Temperature	428 °F / 220 °C*
max rotational speed	3500 rpm / 3500 min ⁻¹

* higher temperatures and pressures on request

** depending on size and speed

Normen

ISO 2858 / ISO 5199

Explosion protection: Category 2 / Zone 1

More
Information

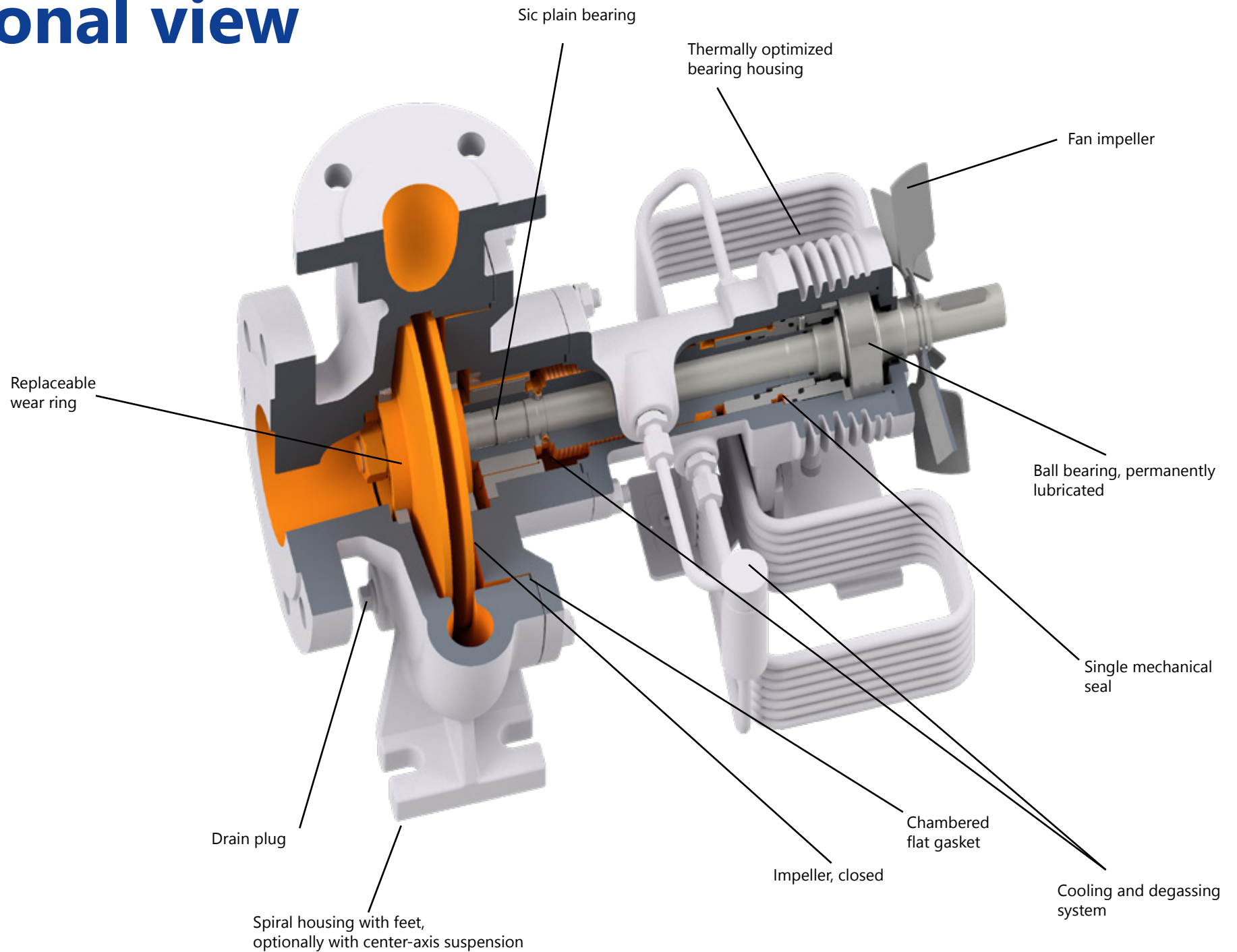


DICKOW PUMPEN GmbH & Co. KG

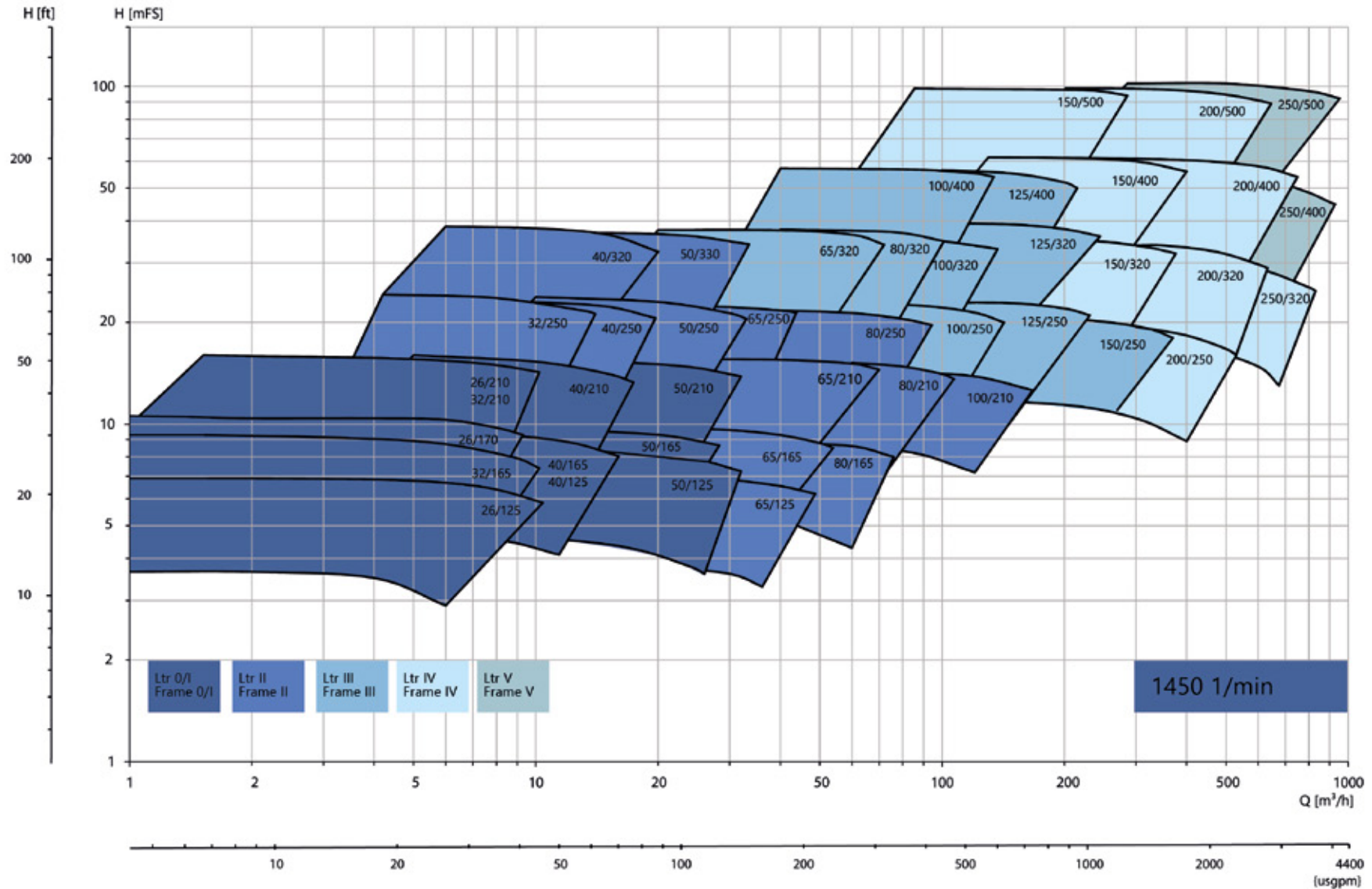
Siemensstr. 22 | 84478 Waldkraiburg | GERMANY

phone: +49 8638 602 0 | mail: info@dickow.de | www.dickow.de

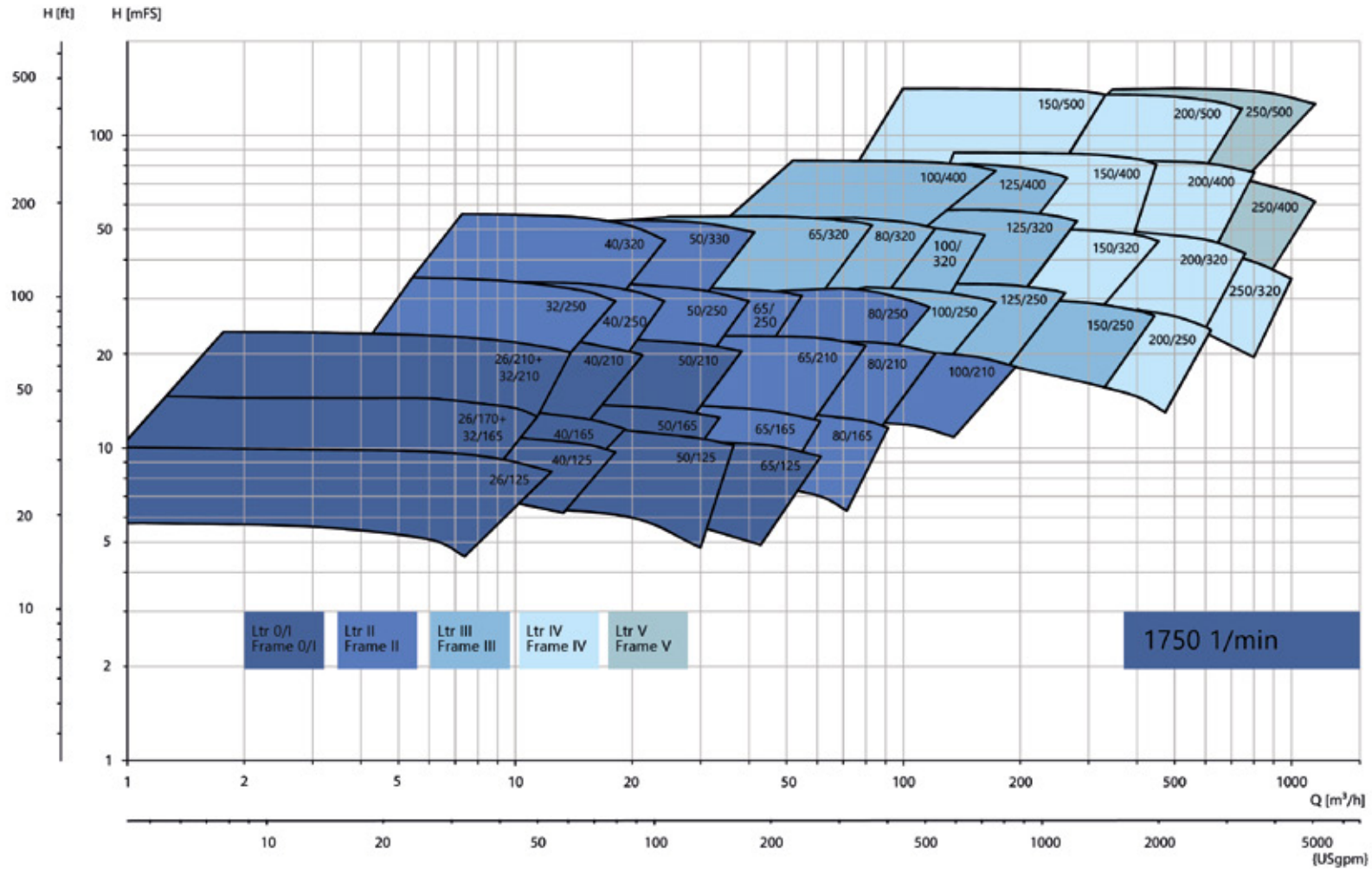
Sectional view



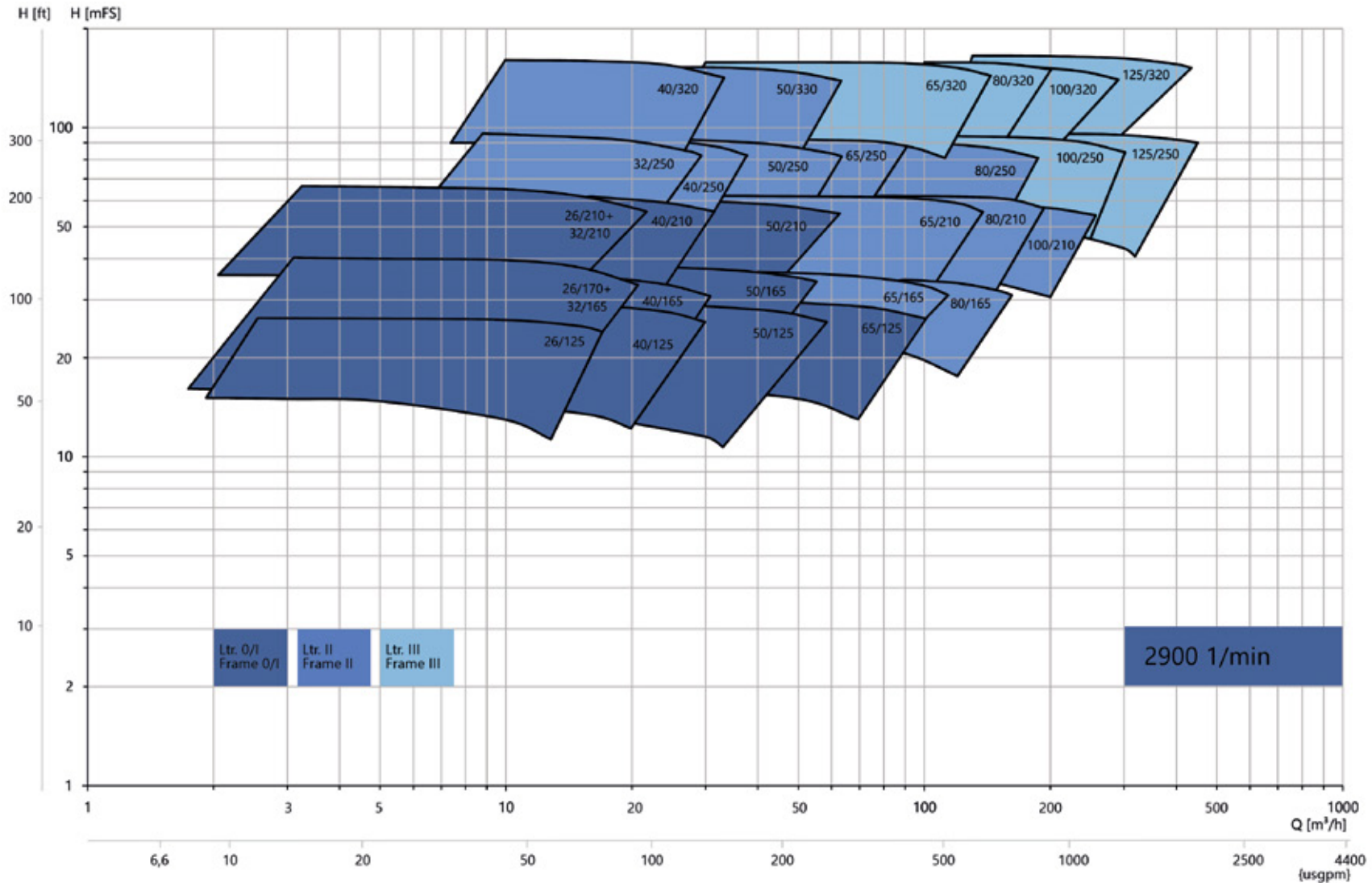
Characteristic curves



Characteristic curves



Characteristic curves



Characteristic curves

