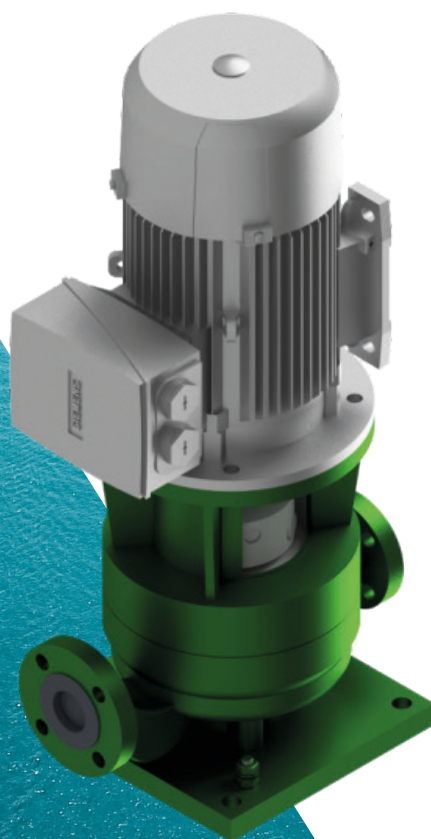


**Volute casing pump
with mechanical seal**



Type NCV

- Vertical design
- Compact construction
- Wide range of variants



Applications

- | | |
|---|-------------------------------------|
| Oil & Gas | <input type="checkbox"/> |
| Chemistry & Petrochemistry | <input checked="" type="checkbox"/> |
| Offshore | <input checked="" type="checkbox"/> |
| Ship technology & Marine | <input checked="" type="checkbox"/> |
| Refueling equipment & Aviation | <input checked="" type="checkbox"/> |
| Industrial heating systems & Heat carriers | <input type="checkbox"/> |
| Tank storages & Tank farms | <input type="checkbox"/> |
| Renewable energy & Enviromental Technology | <input checked="" type="checkbox"/> |

Volute casing pump with mechanical seal

Type NCV



The NCV is a single-staged inline volute casing pump with opposite suction and discharge ports. Axial thrust compensation is provided by relief bores, and wear rings are standard on both the suction and discharge sides. Direct installation of the pumps in the pipeline results in minimal space requirements, making these pumps particularly suitable for compact systems. Time-consuming alignment work on the couplings is eliminated. Due to a wide range of materials and the possibility of installing a wide variety of shaft sealing systems, NCV pumps are suitable for pumping almost all media in the chemical and petrochemical industries.

Design

| | |
|--------------|--------------------|
| Pumptype | Volute casing pump |
| Stages | single-staged |
| Sealing | Mechanical seal |
| Set-up | vertical |
| Self-priming | no |
| Bearings | rolling bearing |
| Lubrication | Grease |

Material

Austenitic cast steel (1.4408 / 1.4571)

Technical data

| | |
|----------------------|-------------------------|
| Q max | 200 m ³ /h** |
| H max | 150 m** |
| Operating pressure | 16 bar* |
| Temperature | 180 °C* |
| max rotational speed | 3500 min ⁻¹ |

* higher temperatures and pressures on request

** depending on size and speed

Norm

ISO 5199

Explosion protection: Category 2 / Zone 1

More
information

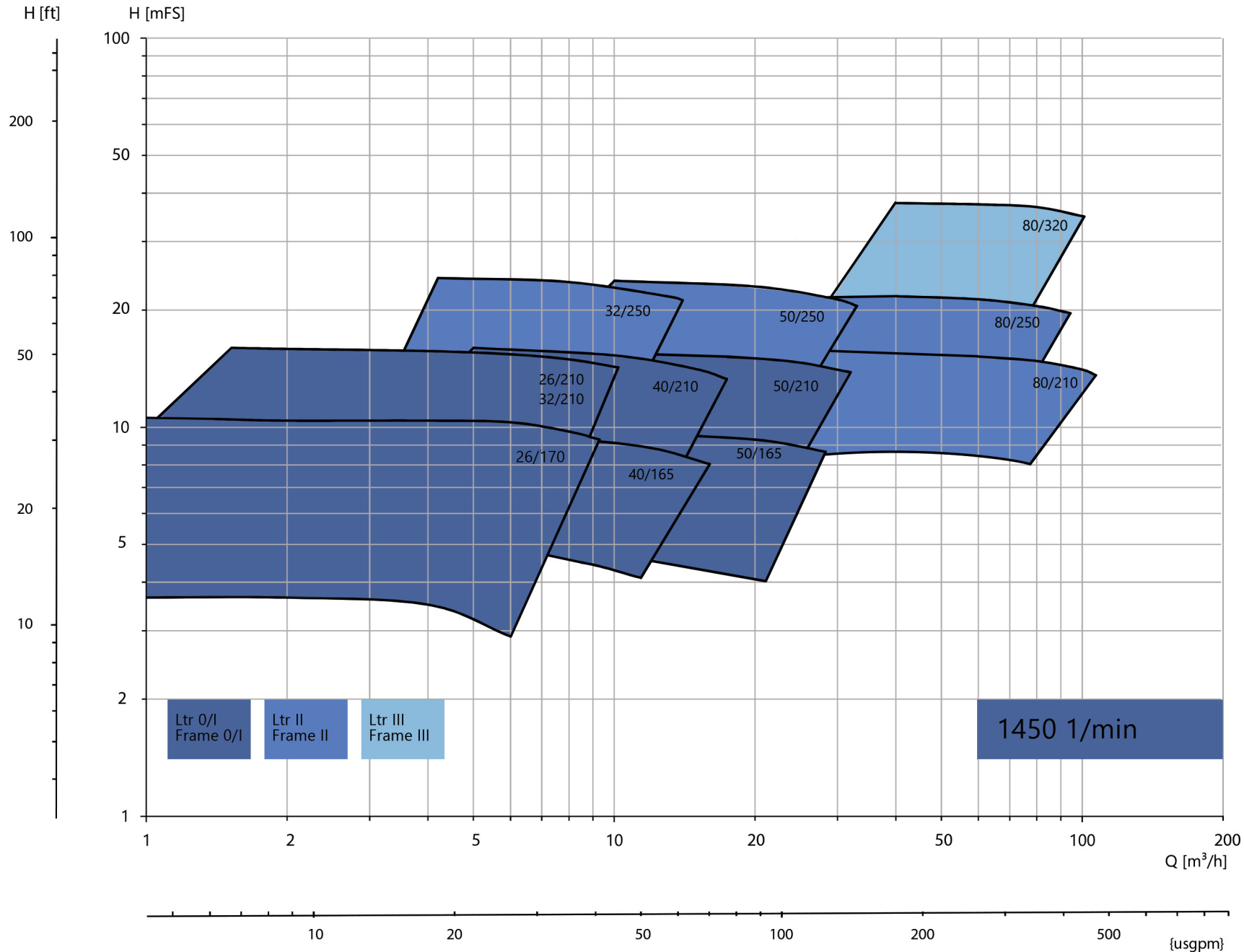


DICKOW PUMPEN GmbH & Co. KG

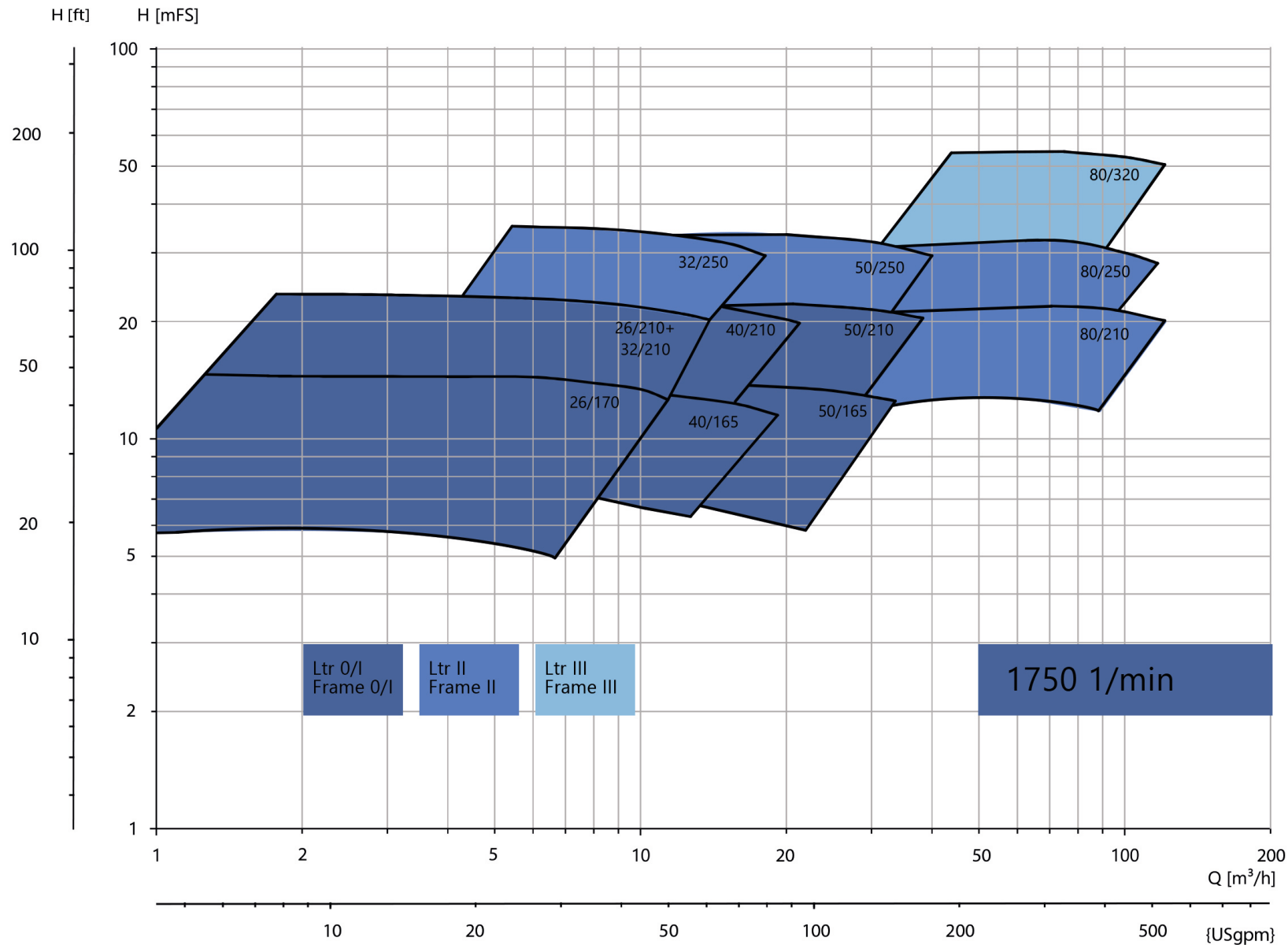
Siemensstr. 22 | 84478 Waldkraiburg | GERMANY

Tel.: +49 8638 602 0 | E-Mail: info@dickow.de | www.dickow.de

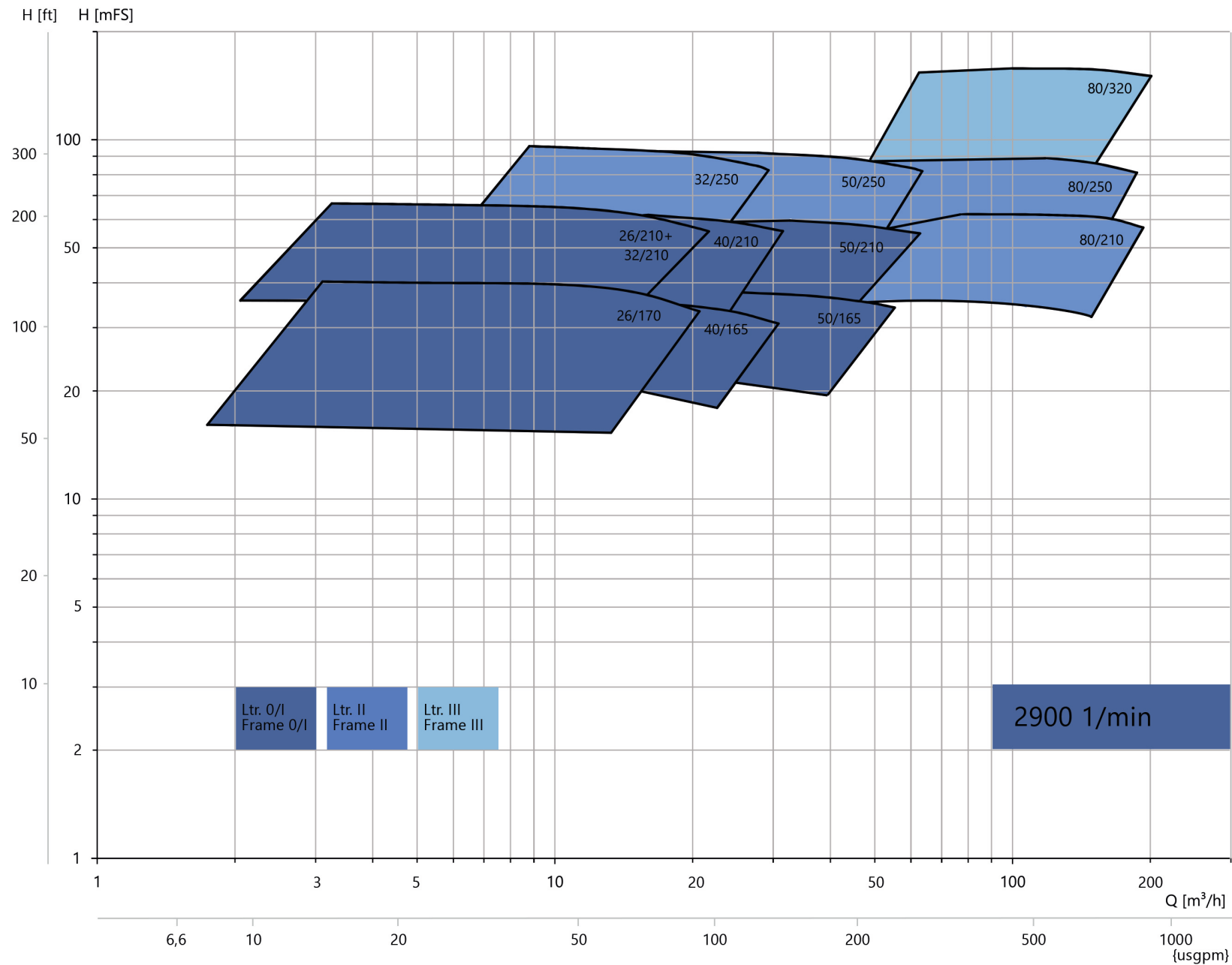
Characteristic curves



Characteristic curves



Characteristic curves



Characteristic curves

